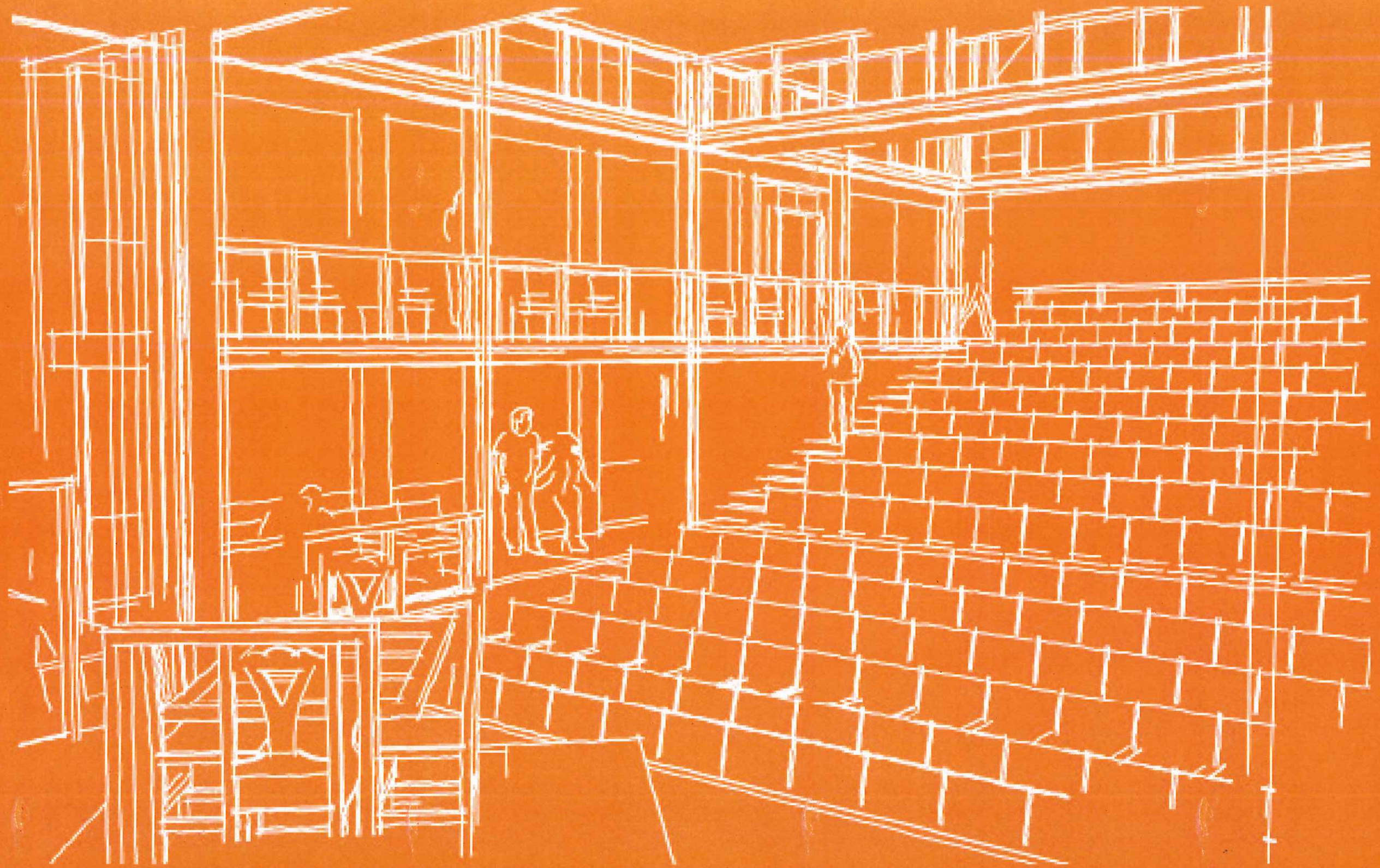


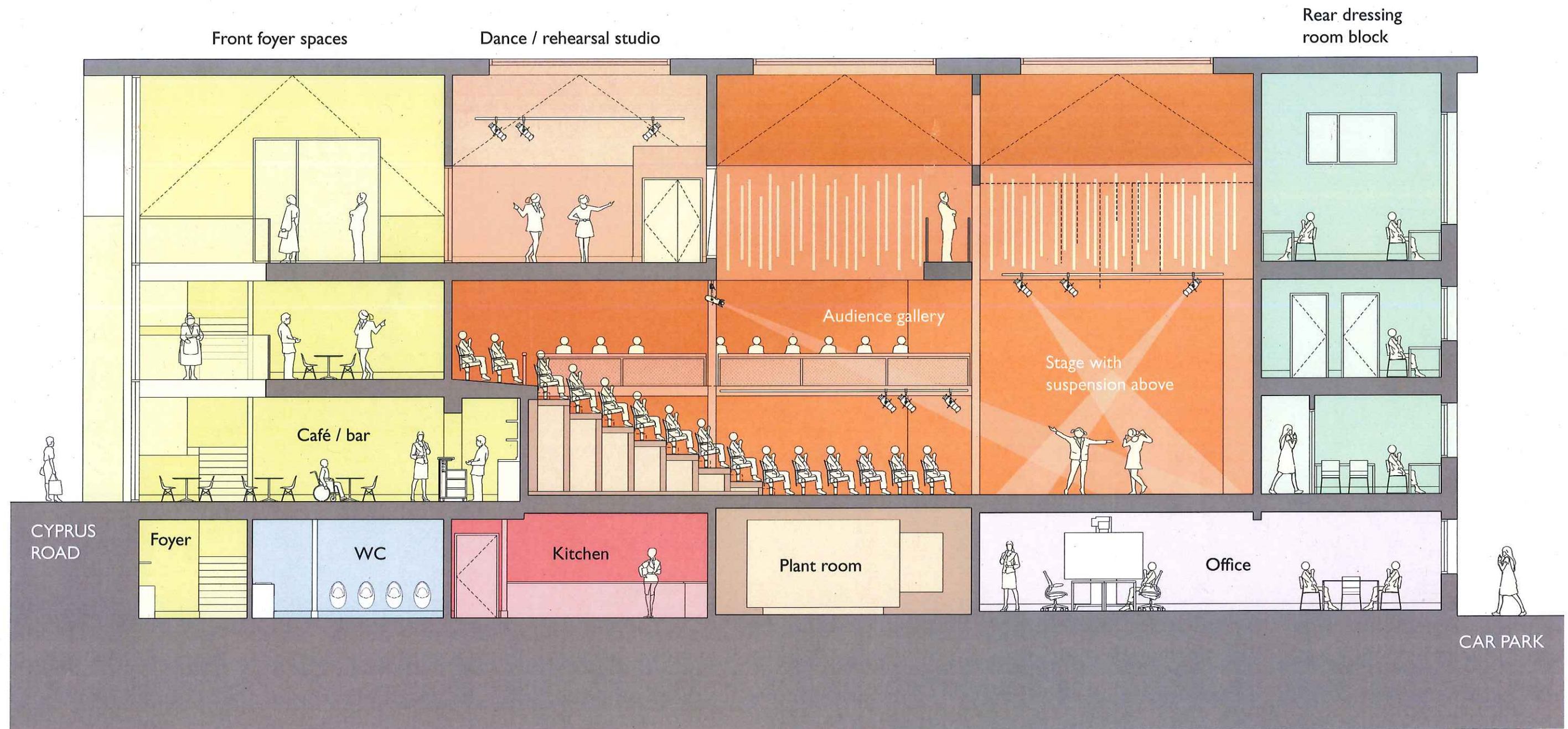
Burgess Hill



Aedas
ArtsTeam

Community Entertainment & Events Centre
Re-imagined Scheme, 11.06.18

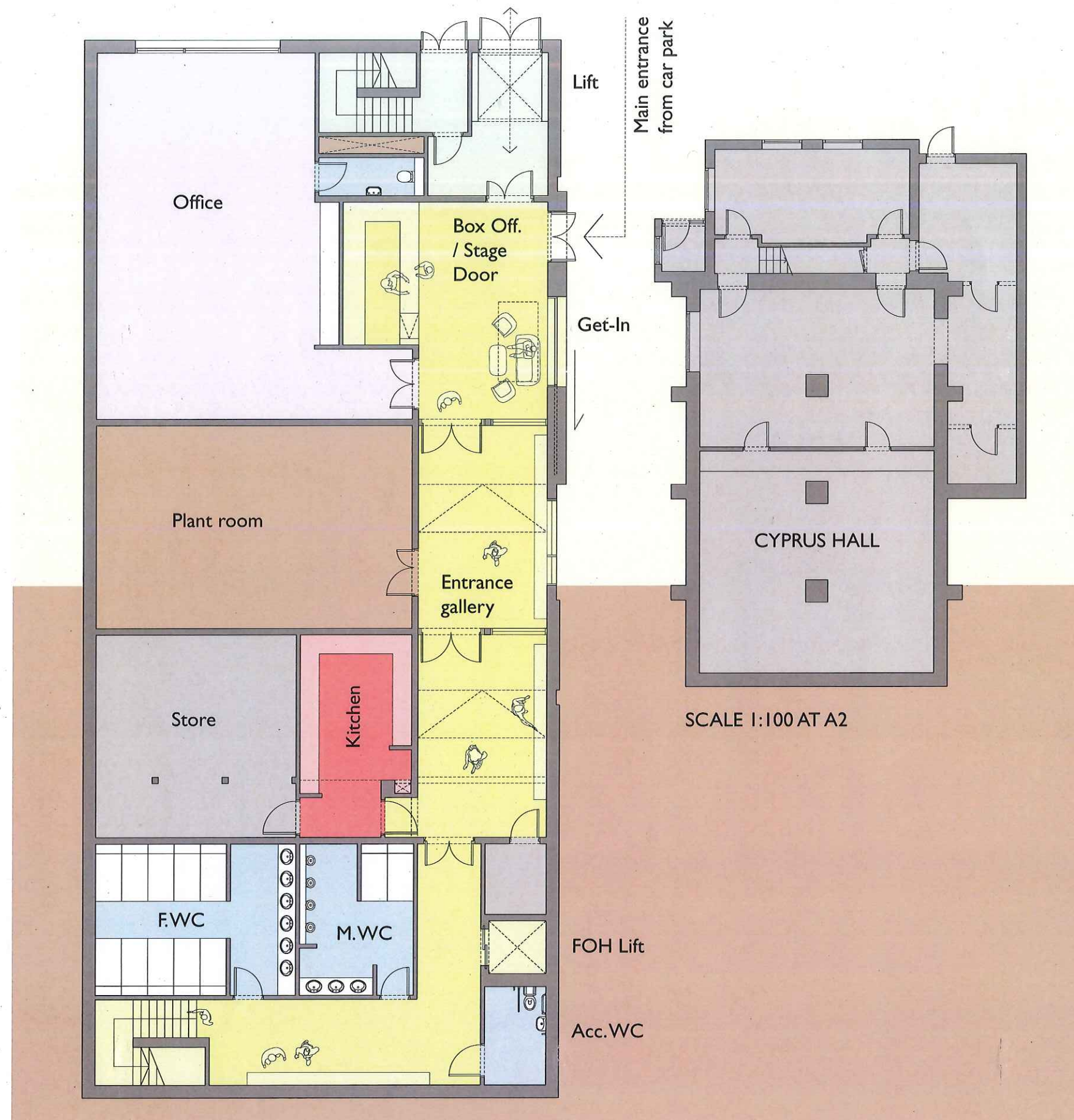
Burgess Hill



NOT TO SCALE AT A2

Long Section
Cyprus Road through to Car Park

Community Entertainment & Events Centre
Re-imagined Scheme, 11.06.18



Lower Ground Floor Plan Car Park Level

- Main entrance from car park.
- North-south entrance gallery with display of local artefacts and artwork.
- Office space with kitchenette and WC - potential to subdivide the space as required.
- Box Office / Stage Door counter / Office Reception.
- Large glazed sliding door and scissor lift platform for bringing larger scenery up to stage level.
- Goods Lift to take smaller scenery to the upper ground floor. This also provides backstage wheelchair access to stage level. Cost effective alternative to a traditional lift as no lift pit or lift overrun required.
- Kitchen with dumb waiter serving bar/café at upper ground floor level.
- Front of house WCs
- Plant Room
- Store
- Cleaners' cupboard
- Front of house lift
- Potential re-landscaping of external alleyway (not shown - for further consideration in later stages)

Accessible
dressing room
/ meeting room
with accessible
WC / shower

Goods
lift

SCALE 1:100 AT A2

Scissor
lift from
below in
wing

Auditorium

Café-bar /
Foyer

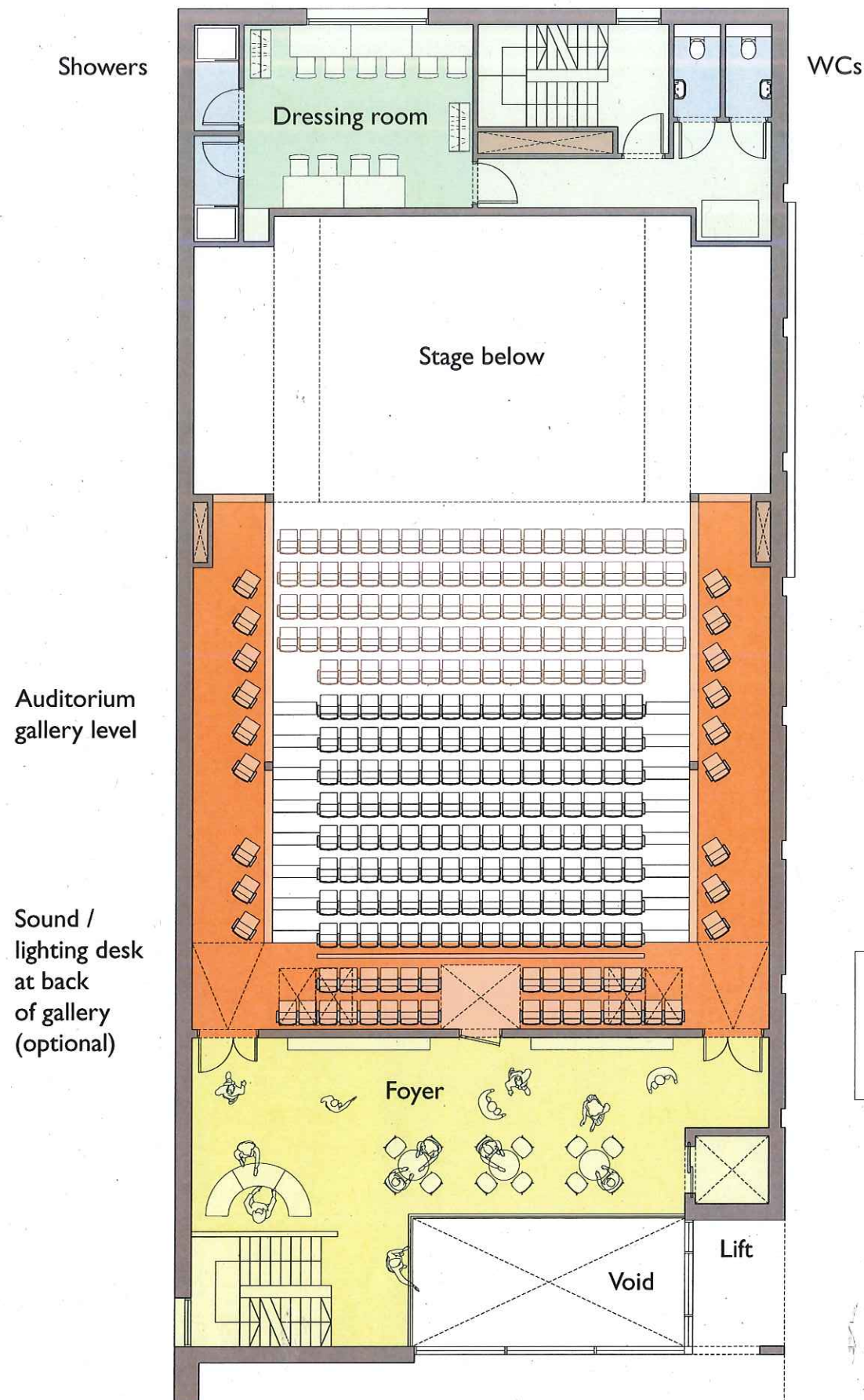
Main entrance
from Cyprus
Road

Upper Ground Floor Plan Cyprus Road Level

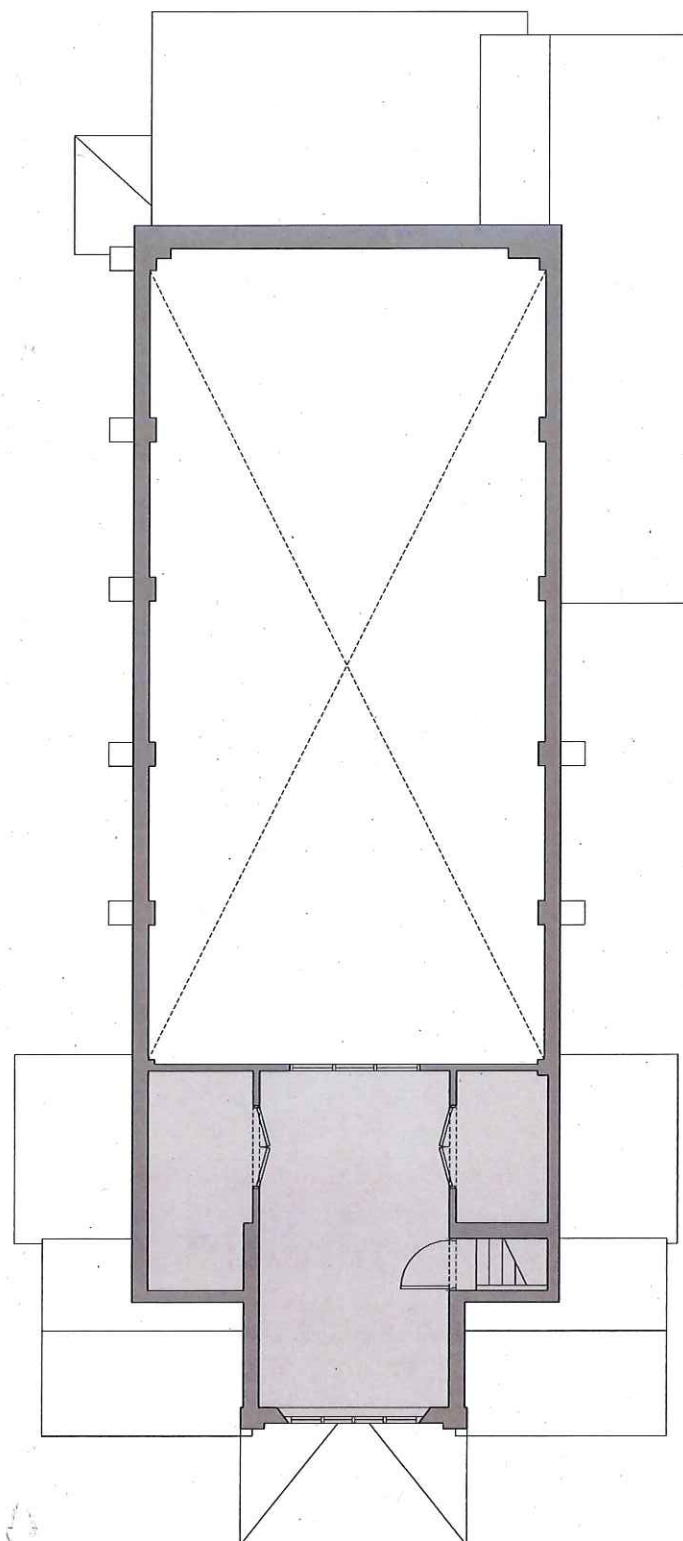
- Main entrance from Cyprus Road
- Café-bar / foyer enlivening the streetscape. Dumb waiter linking to kitchen below.
- Stage level / Auditorium flat floor level
- Front of house lift
- Accessible dressing room with accessible WC/ shower. This could also be used as a meeting room.
- Goods Lift to bring smaller scenery up to stage level (from the car park below). This also provides backstage wheelchair access to stage level.
- Upper limit of scissor lift platform (for bringing larger scenery up to stage level from the car park below).
- Potential re-landscaping of external alleyway (not shown - for further consideration in later stages). Possible relocation of Cyprus Hall escape doors (not shown) to where the external ground level is higher, negating the need for the external ramp and thus widening the alleyway to form a more inviting through-route.

Upper Ground Floor Plan
Cyprus Road Level / Auditorium Flat Floor

Community Entertainment & Events Centre
Re-imagined Scheme, 11.06.18

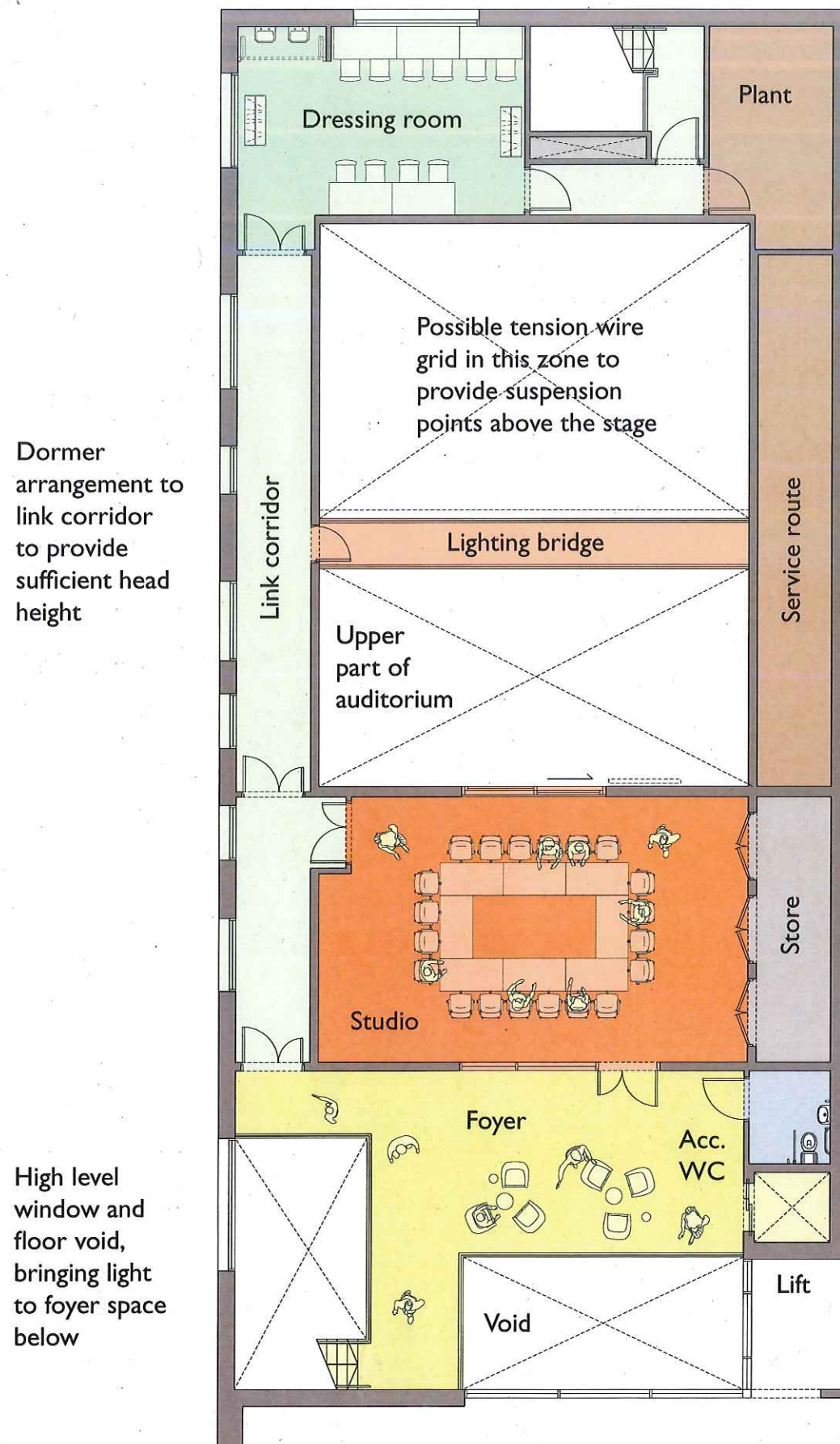


SCALE 1:100 AT A2

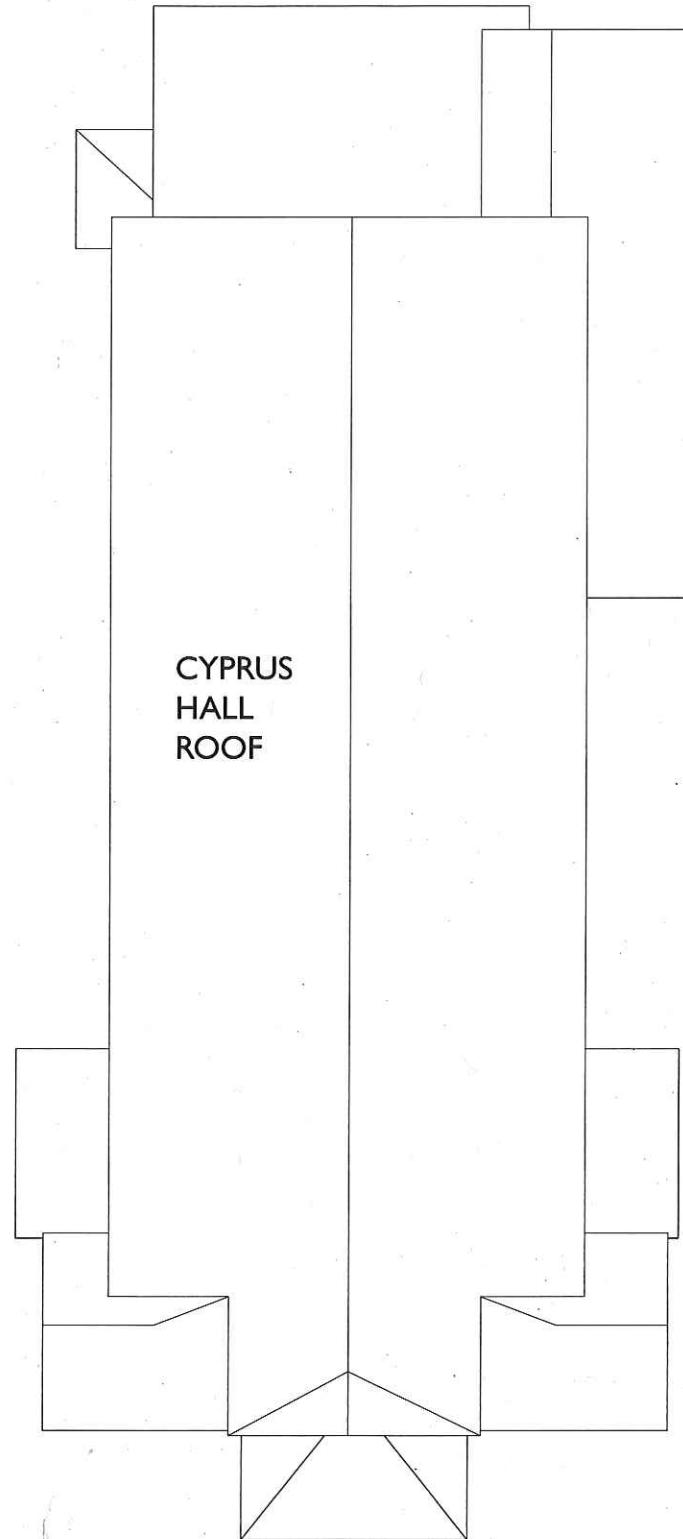


First Floor Plan Auditorium Gallery Level

- Auditorium Gallery Level / entry level to rear of retractable seating block
- Foyer space with visual links to cafe below
- Sound / lighting desk position at the back of the auditorium (with dedicated access from the foyer)
- 10 person dressing room / meeting room
- Backstage showers and WCs
- Front of house lift



SCALE 1:100 AT A2



Second Floor Plan Rehearsal Room Level

- Auditorium Technical Level (upper part of auditorium). Lighting bridge (and possible tension wire grid).
- Dance / rehearsal studio with sprung floor (acoustically separated from auditorium below). This space could also be used for meetings, education and informal performances. The drawing to the left illustrates a typical Council meeting arrangement. For performances with a large cast, the rehearsal room could also be used as an additional dressing room space. The sliding window into the auditorium below means that the two performance spaces could be used in tandem, or the rehearsal space used for the sound / lighting desk.
- Foyer / break-out space with visual links to the levels below. Possible location for exhibitions of local artwork / crafts.
- Accessible WC
- 10 person dressing room / meeting room
- Plant room (extract fan serving auditorium)
- Front of house lift

Capacities / Key Figures

- Stage depth = 7m
Wall to wall width of stage + wings = 14.2m
- Seating capacity as drawn:
 - 96 flat floor seats
 - 128 seats as part of retractable seating unit
 - 46 gallery seats
 - TOTAL 270 SEATS (or 238 seats plus 8 wheelchair positions)
- There are opportunities to increase the 270 figure when required:
 - By taking out the sound / lighting desk from the back of the gallery (e.g. relocating this to the rehearsal room) - gives 8 no. additional seats
 - By adding an extra row in front of the stage (reduces stage depth by 800mm) - gives 20 no. additional seats
- Standing capacity:
 - Stalls standing capacity when seats are retracted (assuming 0.45m² per person) = approx. 315
 - Gallery standing capacity (1 row deep) = approx. 40
 - TOTAL 355 STANDING (APPROX.)
- Toilet provision is based upon the 355 standing capacity (meeting the guidelines set out in the *ABTT Technical Standards for Places of Entertainment*).
- All capacities will be need to be confirmed once more detailed survey information is available.