

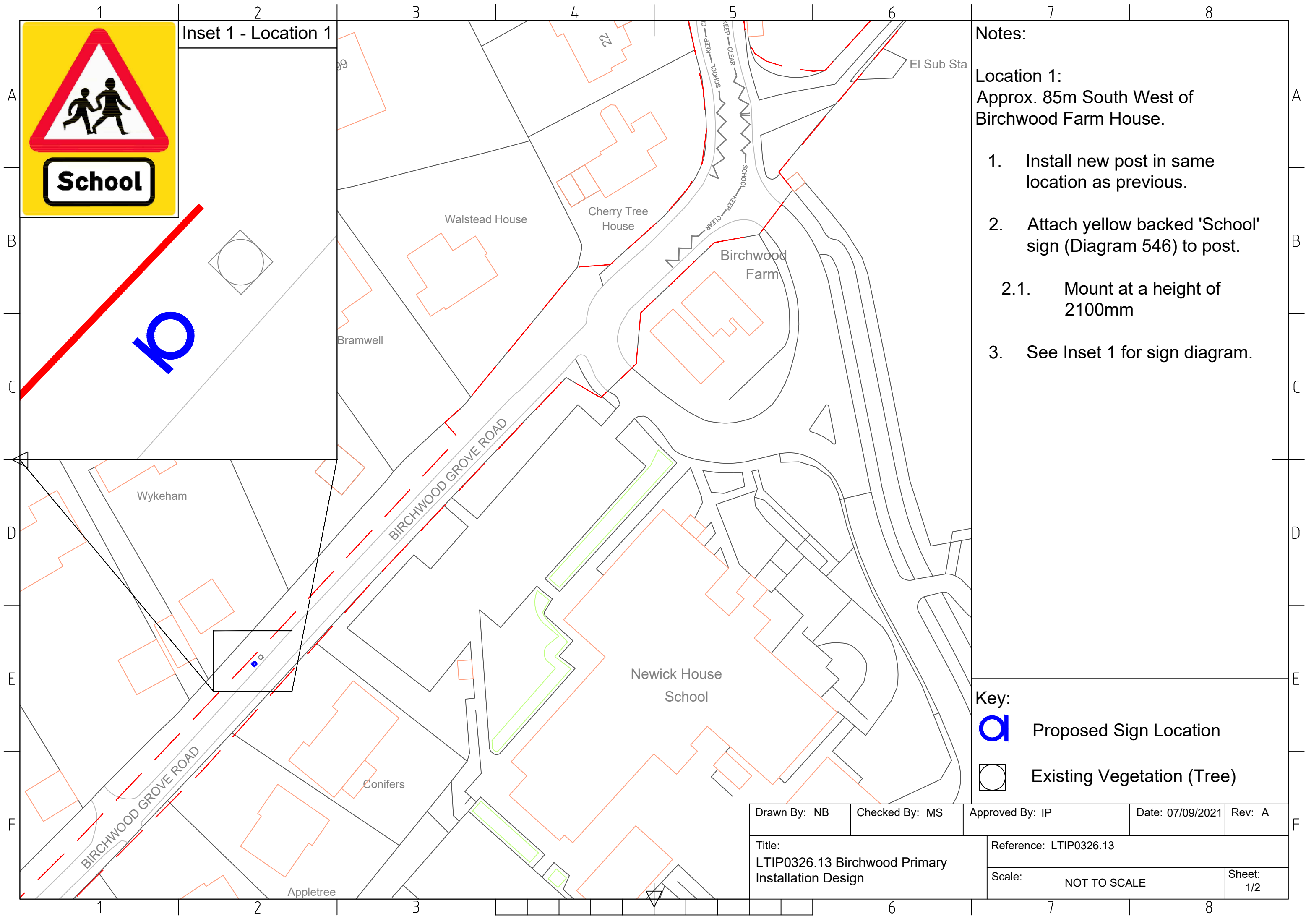


Inset 1 - Location 1



Notes:

Location 1:
Approx. 85m South West of Birchwood Farm House.

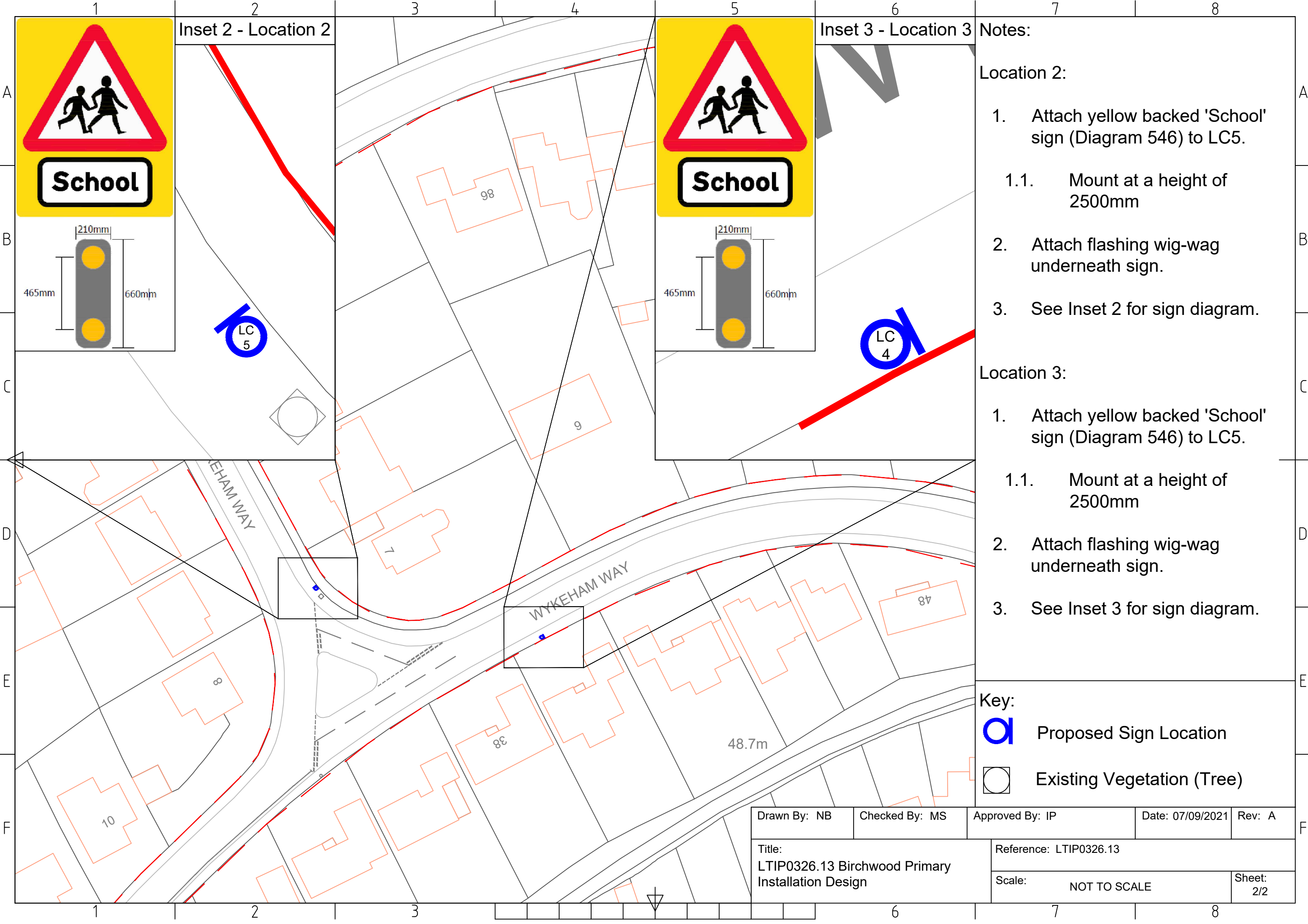
1. Install new post in same location as previous.
2. Attach yellow backed 'School' sign (Diagram 546) to post.
 - 2.1. Mount at a height of 2100mm
3. See Inset 1 for sign diagram.



Key:

-  Proposed Sign Location
-  Existing Vegetation (Tree)

Drawn By: NB	Checked By: MS	Approved By: IP	Date: 07/09/2021	Rev: A
Title: LTIP0326.13 Birchwood Primary Installation Design		Reference: LTIP0326.13		
		Scale: NOT TO SCALE	Sheet: 1/2	



Inset 2 - Location 2



LC 5

Inset 3 - Location 3



LC 4

Notes:


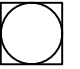
Location 2:

1. Attach yellow backed 'School' sign (Diagram 546) to LC5.
 - 1.1. Mount at a height of 2500mm
2. Attach flashing wig-wag underneath sign.
3. See Inset 2 for sign diagram.

Location 3:

1. Attach yellow backed 'School' sign (Diagram 546) to LC5.
 - 1.1. Mount at a height of 2500mm
2. Attach flashing wig-wag underneath sign.
3. See Inset 3 for sign diagram.

Key:

-  Proposed Sign Location
-  Existing Vegetation (Tree)

Drawn By: NB	Checked By: MS	Approved By: IP	Date: 07/09/2021	Rev: A
Title: LTIP0326.13 Birchwood Primary Installation Design		Reference: LTIP0326.13		
Scale: NOT TO SCALE			Sheet: 2/2	