

Burgess Hill Pantry Basket Analysis

Data was collected in order to understand the composition of Members baskets leaving the Pantry, the value of items, origin and actual cost to the Pantry of each shop.

The contents of 61 baskets were logged during the course of one week in the Pantry from the 4th to the 7th of April 2023. During that week we had no bread donated for the first 2 sessions and also had an excess of Vegetarian Butcher items from Consort foods to give away, consequently this may skew the data and has been excluded from some of the analysis.

Method

Volunteers were asked to collect as much information about each basket of shopping as possible including products, brand details and quantities at checkout. The information was recorded by hand and transferred to a spreadsheet.

The prices of items were taken from the relevant supermarket or similar website i.e. prices that the consumer would have paid if they had purchased these items in a standard shop. Where brand information was unavailable an average price across several supermarkets was taken.

Results

Over 885 items of food and drink were “purchased”.

283 different products were recorded in the baskets.

61 baskets were recorded of a total of 72 shops that week.

Red items, 3 per shop.

Blue items, 7 per shop.

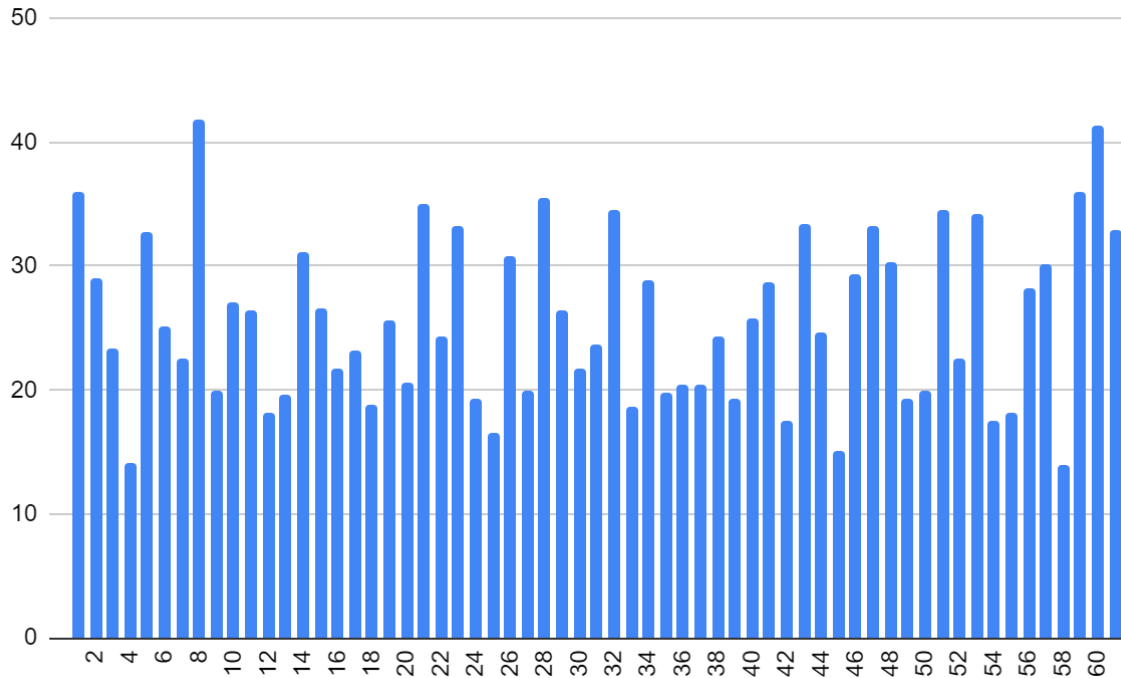
Free Items include bakery e.g. bread and pastries, fruit and vegetables and those items that are very close to best before or use by date within Pantry rules.

The average number of items in a basket was 14.

Value of Baskets Leaving the Pantry

Graph Showing the Value of Each Basket Recorded 4/4/23-7/4/23

Note these totals include all items: Red, Blue and Free



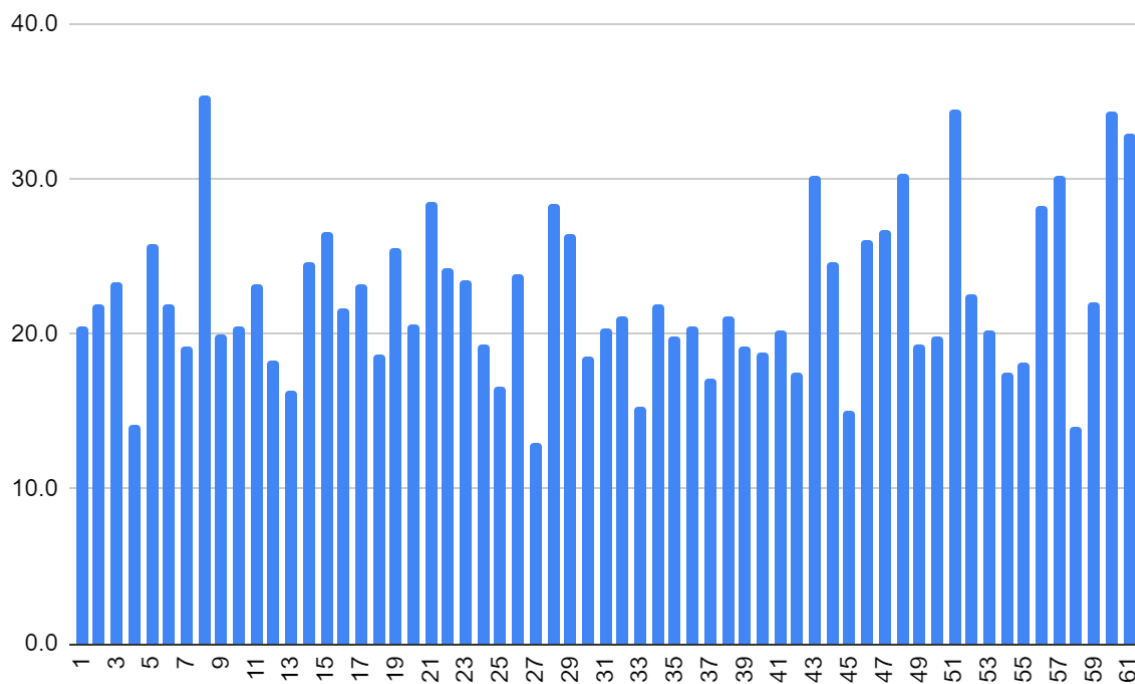
The average value of a basket leaving the Pantry is £25.60

The maximum value is £41.80

The minimum value is £14.00

These values are significantly boosted by the addition of free items to the baskets. These include bread, fruit, vegetables and in this particular week Vegetarian Butcher Nuggets and Meatballs that were close to use by date and Mark Hill Pink Clay Conditioner. The next graph shows values when unusual free items have been removed from the totals. Most weeks and sessions bread, fruit and vegetables are available and so will not be removed.

Graph Showing the Value of Each Basket Recorded Excluding Specific Items



The average value of a basket leaving the Pantry is now £22.40

The maximum value is now £35.30

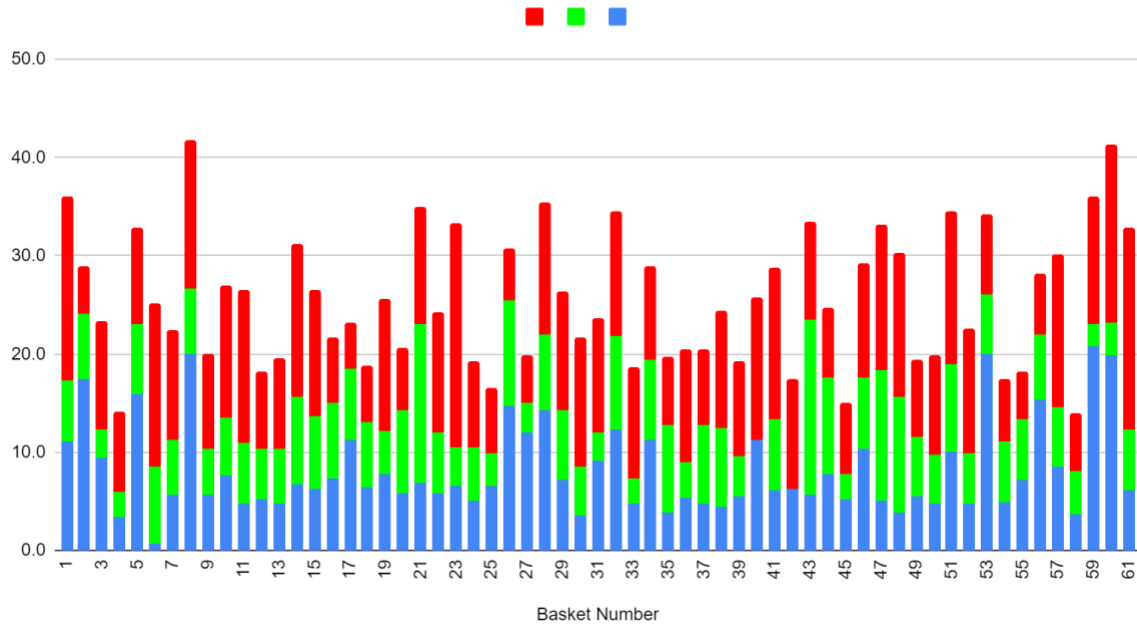
The minimum value is now £12.90

The exclusion of Vegetarian Butcher Products and Mark Hill Pink Clay Conditioner produces data that is more representative of an average week in the Pantry.

Basket Contents

Graph Showing the Composition of Each Basket in Terms of Red, Blue and Free Items

BLUE, FREE and RED

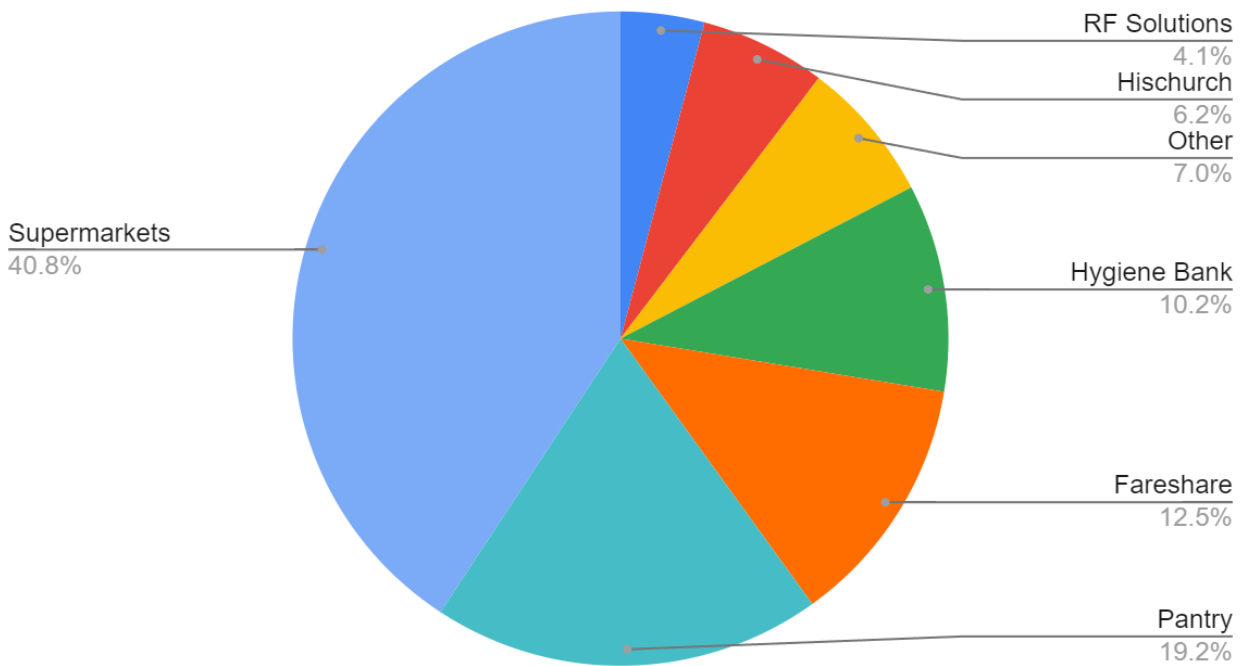


Graph Showing The Origin of Items as a Proportion of Each Basket

This includes items donated by supermarkets, the Hygiene Bank, RF Solutions. Items from Fareshare Sussex, Hischurch and those purchased by the Pantry. Other includes items from dump bins, donations from individuals etc.

<i>Item Source</i>	<i>Total Value</i>
RF Solutions	£64.5
Hischurch	£97.1
Other	£109.7
Hygiene Bank	£160.1
Fareshare	£194.8
Pantry	£299.9
Supermarkets	£637.0
Grand Total	£1563.1

Total Value



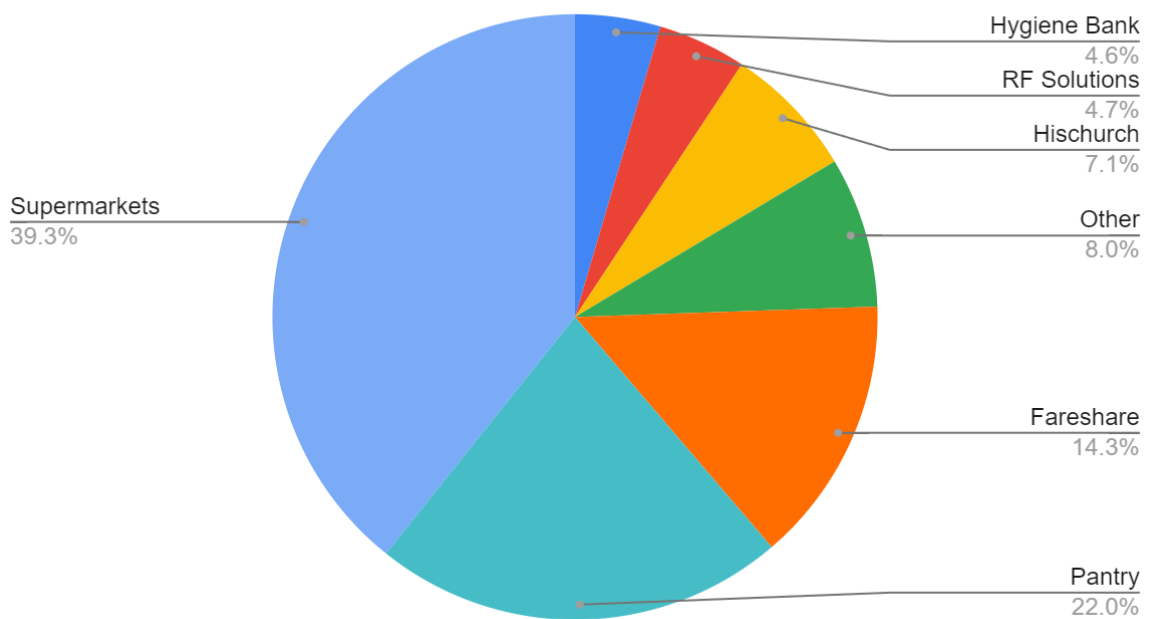
Graph Showing The Origin of Items as a Proportion of Each Basket **excluding specific items**

This includes items donated by supermarkets, the Hygiene Bank, RF Solutions. Items from Fareshare Sussex, Hischurch and those purchased by the Pantry.

Excluded free items: the Vegetarian Butcher products and Mark Hill Conditioner

<i>Item Source</i>	Total Value
Hygiene Bank	62.3
RF Solutions	64.5
Hischurch	97.1
Other	109.7
Fareshare	194.8
Pantry	299.9
Supermarkets	535.5
Grand Total	1363.8

Total Value excluding specific items



Cost to the Pantry for Each Basket

Graph Showing the "Cost" to the Pantry of Each Basket

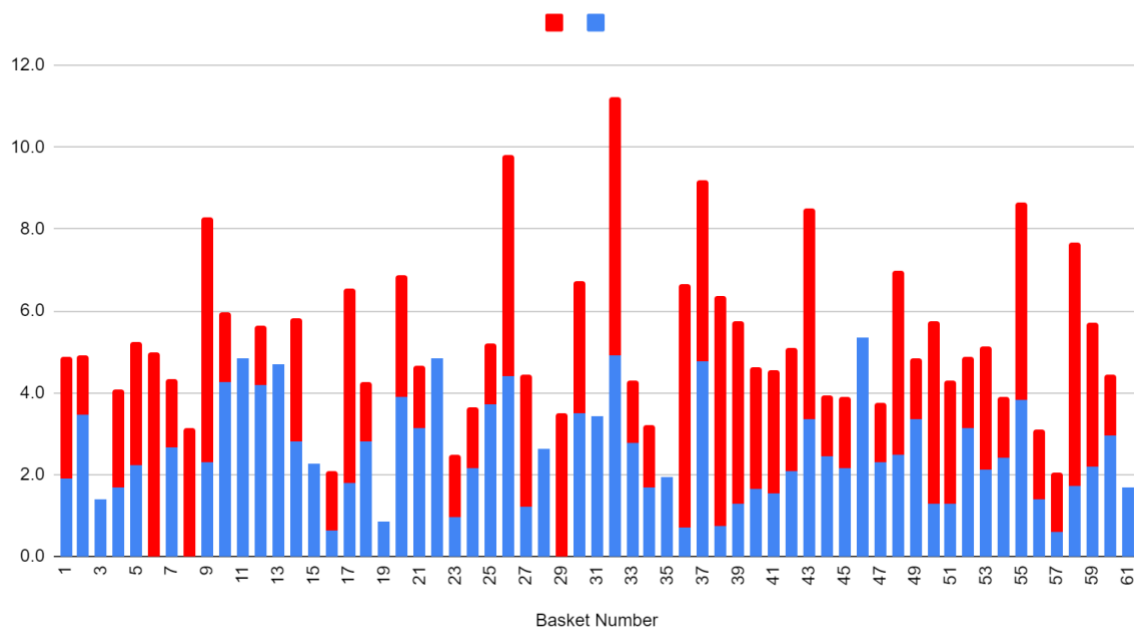
The cost is determined by the value of items in the basket that were purchased by the Pantry

The average value is £4.90

The maximum value is £11.20

The minimum value is £0.90

RED and BLUE items purchased by The Pantry



Conclusions

The average value of a shop from Burgess Hill Pantry is £25.60

The average cost to the Burgess Hill Pantry of each basket is £4.90.

Should there be a review of Members payment of £4 per visit?

Additional costs associated with this need to be added e.g. Fareshare and Hirschurch payments, rent, insurance etc. These are fixed costs not included in the calculation above.

The importance of the supermarket donations of items that are close to use by and best before is critical. These donations add variety and value to the basket, and of course significantly reduce the pressure to purchase items for the Pantry.